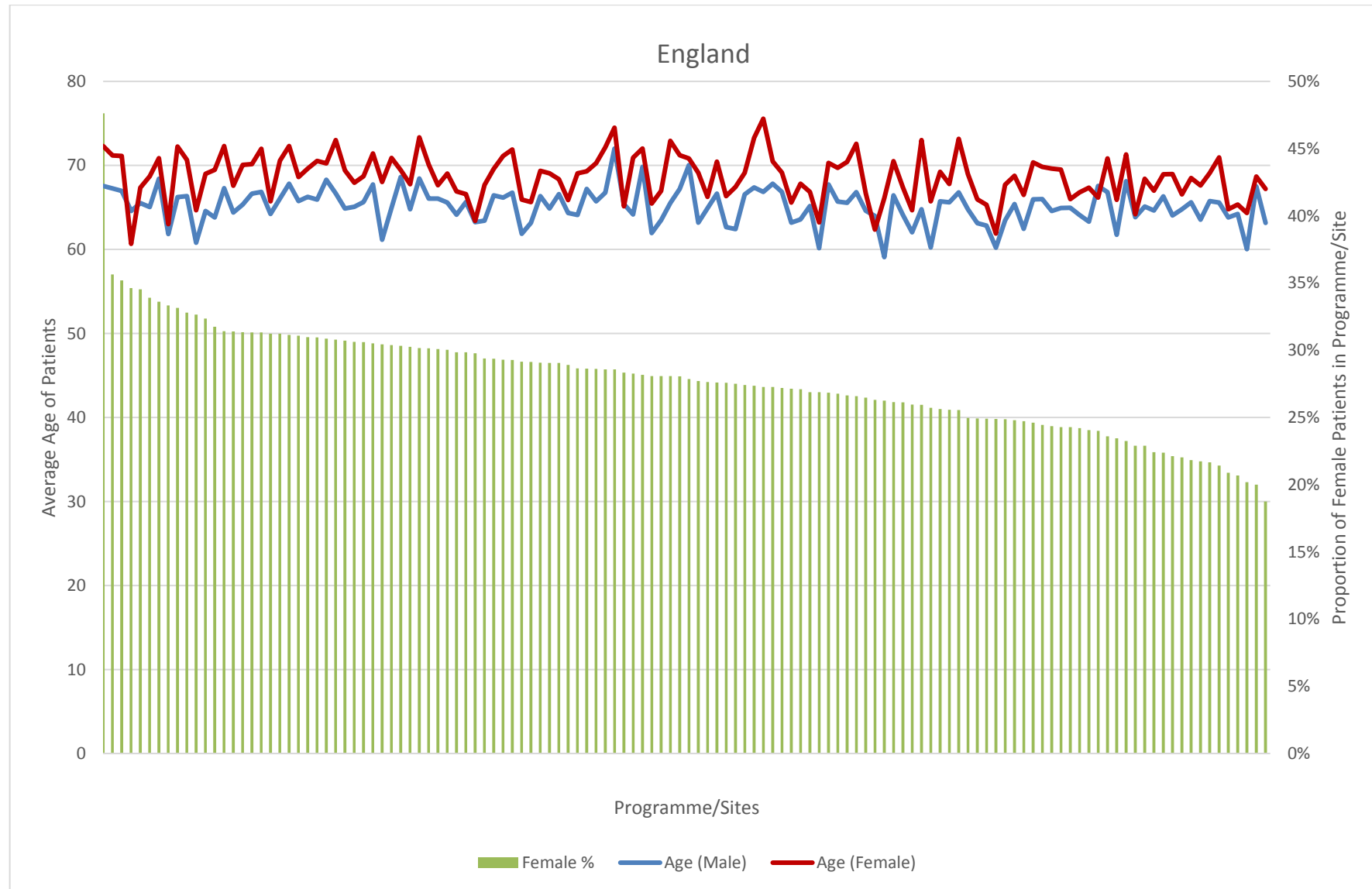


SUPPLEMENT 4

Age and Gender by Programme

This supplement shows the breakdown of the UK CR population by age and gender, data used was from electronic entry into the NACR from 2015-2016.



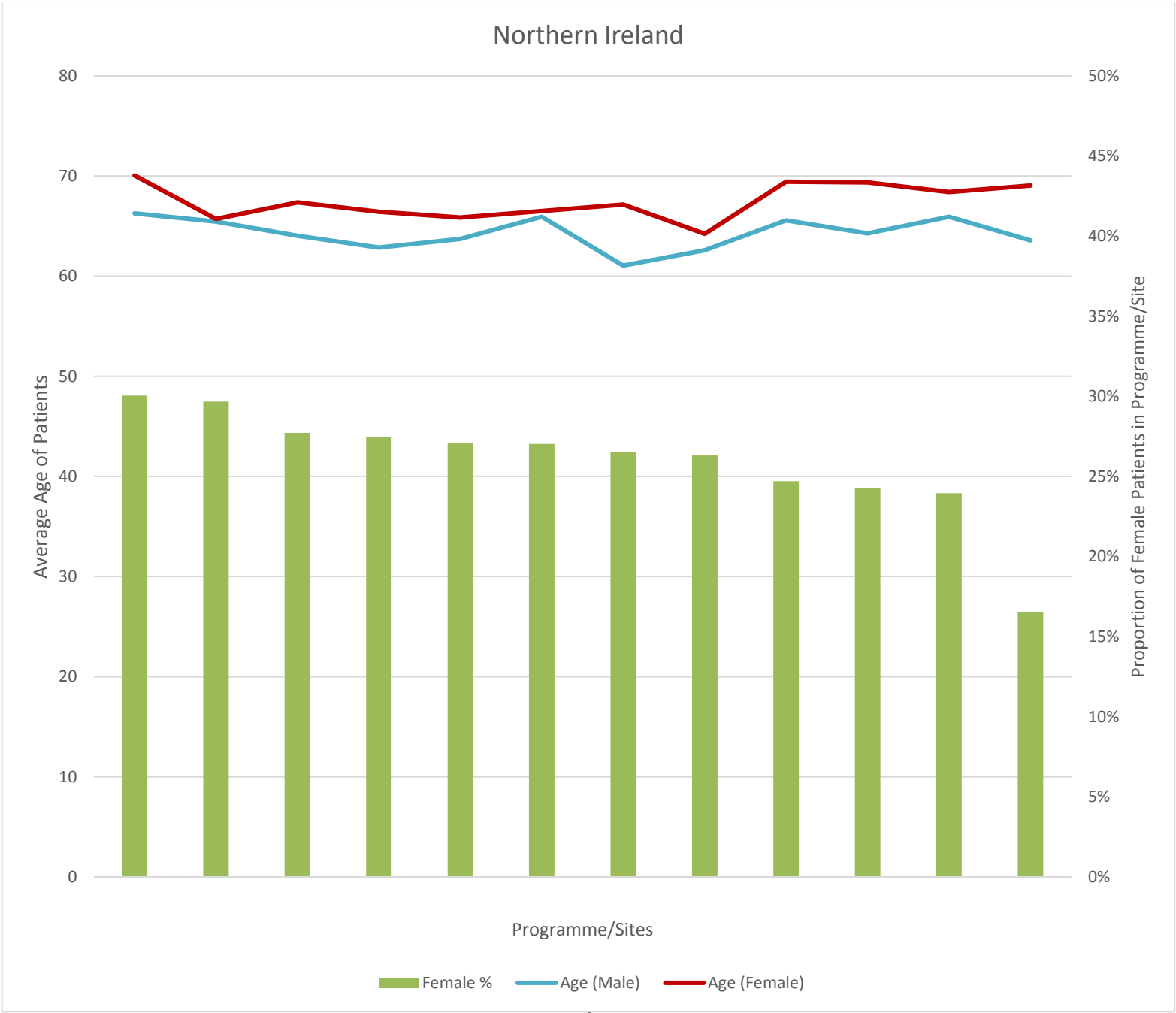
Programme/Site Name	Country	Mean M	% M	Mean F	% F	Min	Max
Barking, Havering and Redbridge Hospitals NHS Trust (King George Hospital)	England	62	77%	66	23%	31	90
Barking, Havering and Redbridge Hospitals NHS Trust (Queens Hospital)	England	62	72%	67	28%	20	95
Aintree University Hospitals NHS Foundation Trust/Liverpool Community Health NHS Trust	England	65	66%	69	34%	23	100
Anglian Community Enterprise CIC (Clacton and Colchester)	England	66	78%	69	22%	38	93
Ashford and St. Peter's Hospital NHS Trust (Ashford and St Peter's)	England	64	77%	64	23%	33	86
Barts Health NHS Trust (Whipps Cross University Hospital)	England	63	75%	66	25%	25	91
Basildon and Thurrock University Hospitals NHS Foundation Trust (Essex Cardiothoracic Centre)	England	65	76%	66	24%	23	89
Bedford Hospital NHS Trust	England	65	78%	67	22%	27	88
Blackpool, Fylde and Wyre Hospitals NHS Foundation Trust	England	67	65%	71	35%	24	100
Bolton Hospitals NHS Trust	England	60	82%	63	18%	27	86
Bradford Teaching Hospitals NHS Foundation Trust - Community Cardiac Rehabilitation (St Luke's Hospital/Queensbury Health Centre/Eccleshill Clinic/Bradford Royal Infirmary)	England	64	68%	69	32%	33	94
Bridgewater Community Healthcare NHS Foundation Trust	England	63	72%	69	28%	19	89
Brighton and Sussex University Hospitals NHS Trust (Royal Sussex County Hospital)	England	66	71%	71	29%	27	98
Buckinghamshire Hospitals NHS Trust	England	65	75%	69	25%	21	94
Burton Hospitals NHS Trust	England	67	69%	73	31%	33	99
Calderdale and Huddersfield NHS Foundation Trust	England	61	70%	68	30%	30	91
Cambridge University Hospital NHS Foundation Trust (Addenbrookes Hospital)	England	65	68%	69	32%	35	86
Central and North West London NHS Foundation Trust (Hillingdon Community)	England	68	52%	72	48%	37	95
Central Manchester and Manchester Children's University Hospitals NHS Trust	England	60	75%	62	25%	23	88
Chesterfield Royal Hospital NHS Foundation Trust	England	68	70%	73	30%	28	100
City Health Care Partnership (Hull)	England	64	69%	68	31%	22	96
Countess of Chester Hospital NHS Foundation Trust	England	66	69%	69	31%	31	93
Croydon Health Services NHS Trust	England	64	73%	68	27%	28	96

Programme/Site Name	Country	Mean M	% M	Mean F	% F	Min	Max
Derby Hospitals NHS Foundation Trust (Ilkeston Community Hospital and Royal Derby Hospital)	England	64	70%	67	30%	20	93
Derbyshire Community Health Services NHS Foundation Trust (Chesterfield and Bolsover)	England	66	70%	68	30%	22	89
Doncaster and Bassetlaw Hospitals NHS Foundation Trust	England	67	71%	72	29%	27	94
Dorset County Hospital NHS Foundation Trust	England	67	64%	71	36%	39	92
East and North Hertfordshire NHS Trust (Lister Hospital and Queen Elizabeth II Hospital)	England	63	76%	67	24%	22	93
East Cheshire NHS Trust	England	66	67%	72	33%	21	95
East Lancashire Hospitals NHS Trust	England	63	71%	66	29%	19	94
East London Foundation Trust (Newham Cardiac Rehab)	England	59	74%	66	26%	27	86
East Sussex Hospitals NHS Trust (Conquest Hospital)	England	66	74%	68	26%	28	95
East Sussex Hospitals NHS Trust (Eastbourne District General Hospital)	England	67	69%	72	31%	20	94
East Yorkshire Hospitals NHS Trust	England	66	78%	69	22%	46	82
Epsom and St Helier University Hospitals NHS Trust (Epsom Hospital)	England	66	75%	70	25%	31	94
Epsom and St Helier University Hospitals NHS Trust (St Helier Hospital)	England	63	72%	67	28%	22	95
Essex Rivers Healthcare NHS Trust	England	64	86%	65	14%	49	85
Frimley Health NHS Foundation Trust (Wexham Park Hospital)	England	63	81%	67	19%	32	91
Frimley Park Hospital NHS Foundation Trust	England	65	75%	69	25%	23	91
George Eliot Hospital NHS Trust	England	65	72%	66	28%	24	89
Gloucestershire Care Services NHS Trust	England	66	74%	71	26%	19	99
Great Western Hospitals NHS Foundation Trust	England	65	74%	73	26%	22	95
Guy's and St Thomas' NHS Foundation Trust	England	60	74%	66	26%	19	94
Hampshire Hospitals NHS Foundation Trust (Alton and Basingstoke & North Hampshire Hospital)	England	64	76%	67	24%	26	94
Hampshire Hospitals NHS Foundation Trust (Royal Hampshire)	England	67	71%	72	29%	34	96
Imperial Healthcare NHS Trust (Central, West London and Charing Cross and Ealing Community Cardiac Rehab)	England	62	75%	66	25%	26	96
Isle of Wight NHS Trust	England	67	74%	73	26%	48	93
Kent Community Health NHS Trust	England	68	76%	66	24%	27	95

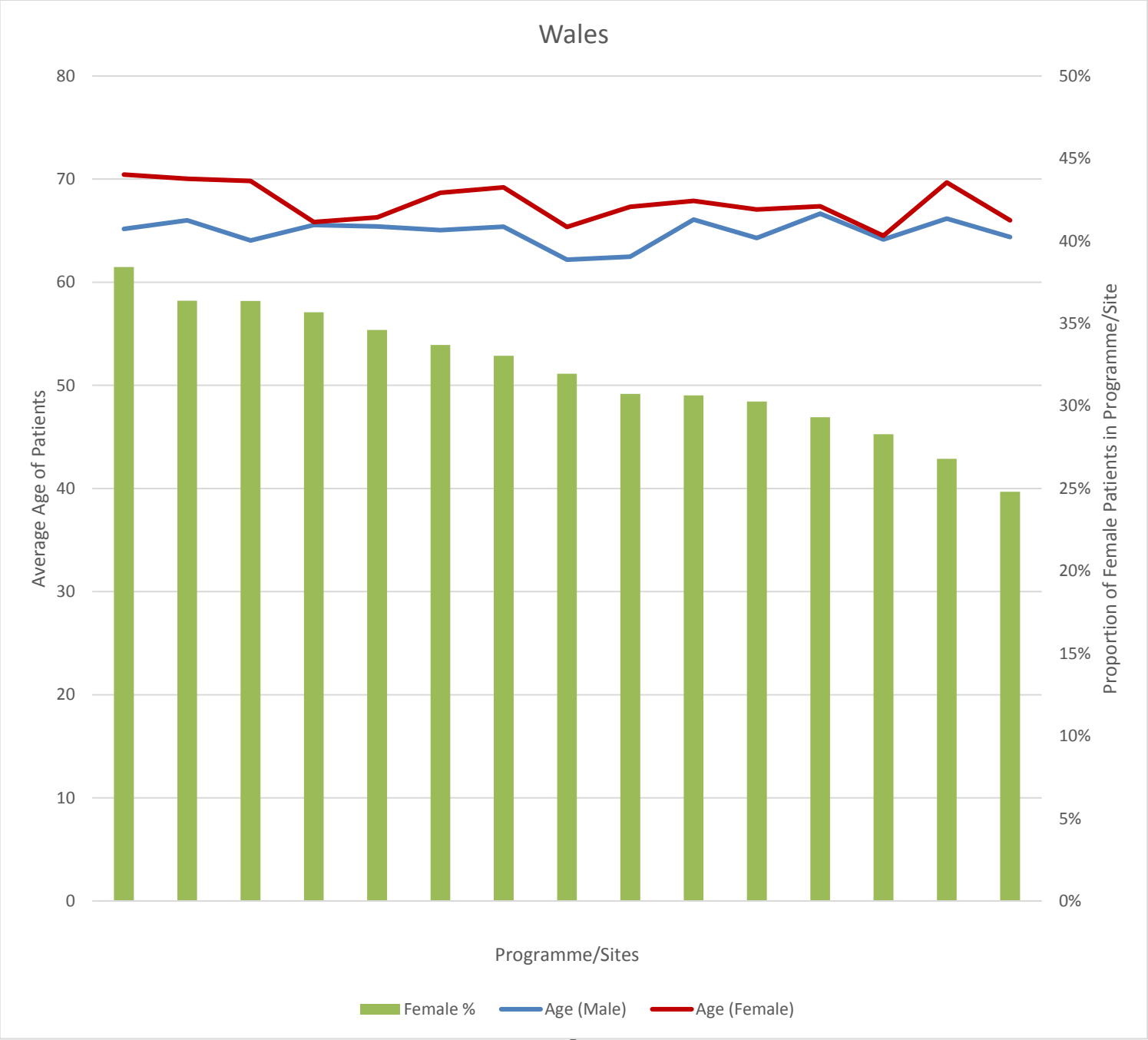
Programme/Site Name	Country	Mean M	% M	Mean F	% F	Min	Max
Kettering General Hospital NHS Trust	England	66	74%	69	26%	23	99
King's College Hospital NHS Foundation Trust (Princess Royal University Hospital)	England	65	70%	68	30%	29	92
Lancashire Teaching Hospitals NHS Foundation Trust (Chorley and South Ribble)	England	66	67%	71	33%	25	98
Lancashire Teaching Hospitals NHS Foundation Trust (Royal Preston Hospital)	England	66	70%	70	30%	21	97
Luton and Dunstable Hospital NHS Foundation Trust	England	66	73%	70	27%	26	93
Maidstone and Tunbridge Wells NHS Trust (Maidstone Hospital)	England	66	73%	70	27%	28	96
Maidstone and Tunbridge Wells NHS Trust (Tunbridge Wells Hospital at Pembury)	England	68	69%	72	31%	18	100
Mid Cheshire Hospitals NHS Foundation Trust	England	64	69%	66	31%	24	98
Mid Essex Hospital Services NHS Trust	England	67	72%	71	28%	29	98
Mid Yorkshire Hospitals NHS Trust (Dewsbury and District Hospital)	England	63	75%	68	25%	33	92
Milton Keynes Hospital NHS Foundation Trust	England	60	80%	64	20%	33	88
NHS Plymouth (Plymouth Community Healthcare CIC)	England	68	77%	71	23%	38	94
North Bristol NHS Trust	England	65	69%	70	31%	30	95
North Cheshire Hospitals NHS Trust	England	65	72%	65	28%	18	95
North Cumbria Acute Hospitals NHS Trust (West Cumberland Hospital)	England	67	69%	70	31%	21	101
North Cumbria University Hospital Trust (Cumberland Infirmary)	England	66	71%	70	29%	36	94
Northern Lincolnshire and Goole Hospital NHS Foundation Trust (Scunthorpe General Hospital)	England	67	72%	70	28%	33	95
Northern Lincolnshire and Goole Hospitals NHS Foundation Trust (Diana Princess of Wales Hospital)	England	65	70%	71	30%	23	97
Oxford Radcliffe Hospitals NHS Trust (Horton General Hospital and John Radcliffe Hospital)	England	66	78%	69	22%	18	99
Papworth Hospital NHS Foundation Trust	England	65	74%	67	26%	18	99
Peninsula Community Health (Liskeard Community Hospital/Royal Cornwall/Mid Cornwall/West Cornwall)	England	70	72%	71	28%	26	97
Pennine Acute Hospitals NHS Trust (Fairfield General Hospital)	England	65	69%	69	31%	25	96
Pennine Acute Hospitals NHS Trust (North Manchester General Hospital)	England	61	67%	65	33%	26	93

Programme/Site Name	Country	Mean M	% M	Mean F	% F	Min	Max
Peterborough and Stamford Hospitals NHS Foundation Trust (Peterborough and City Hospital)	England	66	70%	69	30%	37	95
Poole Hospital NHS Foundation Trust	England	68	73%	70	27%	20	95
Portsmouth Hospitals NHS Trust	England	64	71%	66	29%	34	89
Rotherham NHS Foundation Trust (Rotherham Community Health Centre)	England	65	71%	69	29%	33	91
Royal Berkshire NHS Foundation Trust (Royal Berkshire Hospital and West Berkshire Community)	England	65	77%	68	23%	30	95
Royal Brompton and Harefield NHS Trust	England	64	79%	65	21%	24	89
Royal Devon and Exeter NHS Foundation Trust	England	64	74%	62	26%	31	82
Royal Free London NHS Foundation Trust (Royal Free Hospital)	England	64	78%	69	22%	35	87
Royal Free London NHS Foundation Trust (Chase Farm Hospital/Barnet Hospital)	England	64	72%	71	28%	24	94
Royal Liverpool and Broadgreen University Hospital and NHS Trust (Broadgreen Hospital and Royal Liverpool University Hospital)	England	66	65%	67	35%	21	101
Royal Surrey County Hospital NHS Trust	England	67	71%	68	29%	23	92
Royal United Hospital Bath NHS Trust	England	66	79%	71	21%	31	94
Salisbury NHS Foundation Trust	England	68	73%	70	27%	18	93
Sandwell and West Birmingham Hospitals NHS Trust (City Hospital and Sandwell General)	England	62	74%	65	26%	28	95
Sherwood Forest Hospitals NHS Foundation Trust (King's Mill Hospital)	England	63	71%	68	29%	20	96
Shrewsbury and Telford Hospital NHS Trust (Royal Shrewsbury Hospital)	England	67	69%	72	31%	19	100
Shrewsbury and Telford Hospital NHS Trust (The Princess Royal Hospital)	England	66	69%	71	31%	26	96
South Tyneside NHS Foundation Trust	England	67	73%	76	27%	41	97
Southend University Hospital NHS Foundation Trust	England	67	73%	73	27%	36	96
Southport and Ormskirk Hospital NHS Trust	England	68	69%	70	31%	27	94
St George's Healthcare NHS Trust (St George's Hospital/Queen Mary's Hospital)	England	63	70%	63	30%	25	92
Stockport NHS Foundation Trust	England	66	71%	69	29%	23	97
Surrey and Sussex Healthcare NHS Trust (Crawley Hospital)	England	66	72%	73	28%	43	90
Tameside Hospital NHS Foundation Trust	England	63	73%	66	27%	18	94
The Hillingdon Hospital NHS Trust	England	60	73%	63	27%	32	90

Programme/Site Name	Country	Mean M	% M	Mean F	% F	Min	Max
The Lewisham Hospitals NHS Trust	England	62	71%	66	29%	25	89
The Royal Bournemouth and Christchurch Hospitals NHS Foundation Trust	England	68	66%	71	34%	26	94
The Royal Wolverhampton Hospitals NHS Trust	England	62	72%	65	28%	19	94
The Whittington Hospital NHS Trust	England	63	72%	66	28%	18	95
Torbay Care Trust	England	68	69%	71	31%	20	96
Trafford Healthcare NHS Trust	England	65	69%	68	31%	19	93
University College London Hospitals NHS Foundation Trust	England	64	74%	67	26%	32	94
University Hospital Of South Manchester NHS Foundation Trust	England	64	71%	69	29%	32	94
University Hospitals Coventry and Warwickshire NHS Trust (Hospital of St Cross)	England	65	78%	67	22%	24	95
University Hospitals Coventry and Warwickshire NHS Trust (University Hospital, Coventry)	England	63	75%	65	25%	32	93
University Hospitals Of Leicester NHS Trust (Glenfield Hospital, Leicester General Hospital and Leicester Royal Infirmary)	England	65	73%	67	27%	20	94
Warrington and Halton Hospitals NHS Foundation Trust	England	66	69%	71	31%	22	98
West Hertfordshire Hospitals NHS Trust (Hemel Hempstead)	England	67	73%	69	27%	23	92
West Hertfordshire Hospitals NHS Trust (St Albans City Hospital)	England	66	76%	70	24%	34	95
West Hertfordshire Hospitals NHS Trust (Watford)	England	66	70%	67	30%	29	90
West Suffolk Hospitals NHS Trust	England	65	76%	70	24%	37	91
Western Sussex Hospitals NHS Foundation Trust (St Richards)	England	69	70%	69	30%	33	90
Weston Area Health NHS Trust	England	67	76%	71	24%	34	90
Wirral Community NHS Foundation Trust (Wirral Heart Support Centre)	England	66	69%	69	31%	19	93
Worcestershire Acute Hospitals NHS Trust (Alexandra Hospital/Evesham Cardiac Rehab)	England	67	73%	73	27%	31	97
Worcestershire Acute Hospitals NHS Trust (Kidderminster Hospital)	England	67	71%	69	29%	19	93
Worthing and Southlands Hospitals NHS Trust	England	66	69%	70	31%	21	94
Wye Valley NHS Trust (Hereford County Hospital, Leominster and Ross on Wye)	England	70	72%	72	28%	19	99
York Teaching Hospital NHS Foundation Trust (Scarborough/Whitby/Ryedale/Whitby Community Hospital)	England	67	73%	69	27%	37	95
York Teaching Hospital NHS Foundation Trust (York Hospital)	England	66	71%	70	29%	33	95
Your Healthcare CIC (Surbiton Hospital)	England	65	76%	70	24%	35	90



Programme/Site Name	Country	Mean M	% M	Mean F	% F	Min	Max
Belfast Health and Social Care Trust (Belfast City Hospital)	Northern Ireland	63	73%	66	27%	18	93
Northern Health and Social Care Trust (Antrim Area Hospital)	Northern Ireland	64	76%	69	24%	27	92
Northern Health and Social Care Trust (Causeway Hospital)	Northern Ireland	66	70%	70	30%	35	89
Northern Health and Social Care Trust (Mid-Ulster Hospital)	Northern Ireland	66	73%	67	27%	29	87
Northern Health and Social Care Trust (Whiteabbey Hospital)	Northern Ireland	66	76%	68	24%	21	91
South Eastern Health and Social Care Trust (Downe Hospital)	Northern Ireland	61	73%	67	27%	22	88
South Eastern Health and Social Care Trust (Lagan Valley Hospital)	Northern Ireland	64	83%	69	17%	40	83
South Eastern Health and Social Care Trust (Ulster Hospital)	Northern Ireland	66	75%	69	25%	32	96
Southern Health and Social Care Trust (Craigavon Area Hospital)	Northern Ireland	64	72%	67	28%	24	89
Southern Health and Social Care Trust (Daisy Hill Hospital)	Northern Ireland	65	70%	66	30%	26	89
Southern Health and Social Care Trust (South Tyrone Hospital)	Northern Ireland	63	74%	64	26%	29	91
Western Health and Social Care Trust (Altnagelvin Hospital)	Northern Ireland	64	73%	66	27%	26	90



Programme/Site Name	Country	Mean M	% M	Mean F	% F	Min	Max
Abertawe Bro Morgannwg University Health Board (Morrison Hospital, Singleton Hospital)	Wales	65	67%	69	33%	27	88
Abertawe Bro Morgannwg University Health Board (Neath/Port Talbot Hospital)	Wales	64	75%	66	25%	24	92
Abertawe Bro Morgannwg University Health Board (Princess of Wales Hospital)	Wales	66	69%	68	31%	20	91
Aneurin Bevan University Health Board (County Hospital)	Wales	62	69%	67	31%	23	91
Aneurin Bevan University Health Board (Nevill Hall Hospital)	Wales	67	71%	67	29%	36	92
Aneurin Bevan University Health Board (St Woolos Hospital)	Wales	64	64%	70	36%	31	92
Aneurin Bevan University Health Board (Ysbyty Ystrad Fawr)	Wales	64	72%	65	28%	34	91
Betsi Cadwaladr University Health Board (North West Wales Cardiac Rehab Programme)	Wales	65	65%	66	35%	25	90
Betsi Cadwaladr University Health Board (Wrexham Maelor Hospital, East Cardiac Rehabilitation Service)	Wales	65	66%	69	34%	21	96
Betsi Cadwaladr University Health Board (Ysbyty Glan Clwyd & Llandudno)	Wales	66	73%	70	27%	20	92
Cardiff and Vale University Health Board (University Hospital of Wales, Llandough Hospital)	Wales	64	70%	67	30%	21	91
Cwm Taf University Health Board (Prince Charles Hospital)	Wales	62	68%	65	32%	28	85
Cwm Taf University Health Board (Royal Glamorgan Hospital)	Wales	66	64%	66	36%	29	91
Hywel Dda University Health Board (Bronglais Hospital)	Wales	65	62%	70	38%	18	90
Hywel Dda University Health Board (Glangwili Hospital, Prince Philip Hospital)	Wales	66	64%	70	36%	24	95

Programme/Site Name	Country	Mean M	% M	Mean F	% F	Min	Max
Isle of Man (Nobles Hospital)	Other	64	65%	64	35%	29	86